

—
NUEVAMUTUASANITARIA
—

Always close



**INTERNATIONAL
STUDENTS**



FERCO
· Advanced Education ·

Who are we?

01



Who are we?

Nueva Mutua Sanitaria, with 70 years of experience, **is one of the leading health insurers of lawyers and professionals in Spain.** We are an entity committed to the health of our insured, building a mutual society based on proximity, quality and excellence in service.

Our Identity:

At Nueva Mutua Sanitaria, we put each of our policyholders at the centre, adapting our services to their individual needs. We have a team of professionals committed to comprehensive well-being and the continuous improvement of quality of life, offering close and personalized attention.

We provide health care of the highest level, with coverage and services that meet the highest standards of technological and human quality demanded by today's professionals.

Since 1954, always supporting professionals

Spain study VISA requirements

02

HOW TO FIND THE REQUIREMENTS FOR A STUDENT VISA IN SPAIN?

1. Enter the official website of the Government of Spain (MAEC)

You can locate the Spanish embassy or consulate corresponding to your country of residence in the official search engine for embassies and consulates:

<https://www.exteriores.gob.es/es/EmbajadasConsulados/Paginas/index.aspx>

2. Search for your country and select the consulate that processes visas:

- Enter the name of your country.
- Select the Spanish Embassy or Consulate General.
- Avoid honorary consulates, as they do not process visas.

3. Go to the section where visas are listed.

Each consulate organises its website differently. You will usually find the information under one of the following headings:

Common path 1:

Consular Services → Visas → National Visas → Student Visa

Common path 2:

Procedures → Visas → Studies

Common path 3:

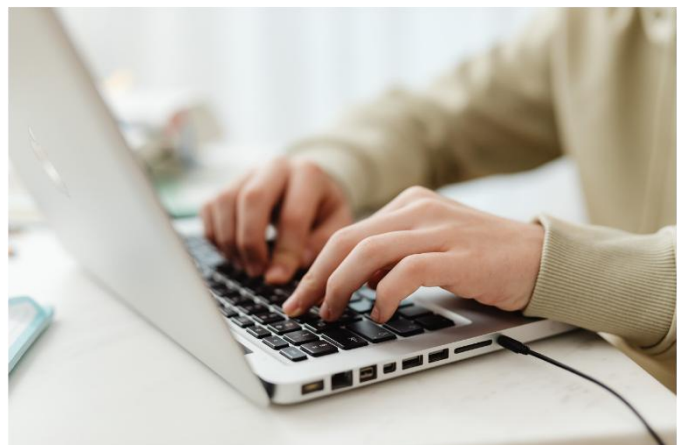
Information for Foreign Nationals → Visas → Studies

Common path 4:

Side menu → National Visas → Study

It may also appear as:

- “Study visa”
- “National visas (type D)”
- “Study stay”



HOW DO I FIND OUT ABOUT THE REQUIREMENTS FOR A STUDENT VISA IN SPAIN?

Important information regarding your student visa for Spain

Please check carefully the specific requirements regarding health insurance set by your consulate.

If the duration of your insurance does not match the requirements of your consulate, your visa application may be rejected, even if the rest of your documentation is in order.

All non-EU students must provide private insurance with no excess and coverage equivalent to the Spanish public system. However, each consulate may impose specific conditions regarding the duration of the insurance.

Real-life examples of variations between consulates:

- In some countries, the insurance must start at least one month before the start of the course.
- In others, the insurance must cover the entire duration of the academic year.
- Some consulates require the insurance to coincide with the date of arrival in Spain, even if you arrive before the start of the course.
- Others require the insurance to cover an additional period, such as 15 days after the end of the course or even an extra month.
- In certain countries, the insurance is required to cover the entire planned stay, including holidays, work placements or extensions.

Get your insurance

03

NUEVAMUTUASANITARIA

Nueva Mutua Sanitaria offers health insurance in Spain at preferential rates, specially designed for international students, which can be taken out quickly and easily, thereby making it easier to obtain a student visa.

If you need to take out health insurance for your visa, you can do so by clicking on “Take out insurance” on the website.

HOW DO I GET STUDENT HEALTH INSURANCE?

The process of taking out a student health insurance policy consists of four main stages:

1. Complete the insurance application form and the online health questionnaire.
2. Once we have received your application, we will process your policy and contact you to confirm this.
3. We will send you a payment link so you can pay by card. The email containing the link includes the instructions you need to make the payment. You must provide us with a certificate stating that you will be studying at a university in Spain.
4. Finally, once you have made the payment, we will contact you to send you the insurance certificate and the specific terms and conditions.

With these documents, you will be able to apply for your visa. This process can take around 3 working days, so please do not delay in starting the procedures to take out the insurance. We can arrange the insurance up to 3 months in advance of your arrival in Spain and will only charge you for the duration of your stay.

INSURANCE APPLICATION

Below are some notes on the fields you need to fill in when completing the insurance application form. First, you need to go to the form's URL. Once there, you will see a series of fields that you must complete with your personal data:

START DATE:

INSURANCE DURATION:

HOLDER INFORMATION
*The holder must be of legal age (+18 years)

NAME: _____

SURNAME: _____

SURNAME 2 (Optional): _____

TITLE:

NIF/ NIE/ PASSPORT: Accepts pdf, jpg and png files (Max. 5 MB).
 NINGÚN ARC...LECCIONADO

COUNTRY OF ORIGIN:

TOWN: _____

POSTAL CODE: _____

TYPE OF ROAD: ADDRESS: _____

NUMBER: _____ PORTAL: _____ STAIRCASE: _____ FLOOR: _____ DOOR: _____

Please bear the following points in mind:

- You will be the policyholder, even if someone else is paying for the policy. For student insurance, the policyholder must also be the insured person.
- You can take out a policy using your National Identity Card (DNI), Foreigner Identification Number (NIE) or passport.
- You must provide a mobile phone number to validate the health questionnaire via electronic signature. An SMS containing a 7-digit code will be sent to the mobile phone number provided.
- Please take care when entering your mobile phone number. You must specify the country of the phone line, as this is vital information for receiving the SMS required to digitally sign the insurance application.
- Your email address is also essential so that we can keep you informed about the process of taking out your insurance. All communication with you will be via the email address you provide.
- The address you must include on the application is the address where you will be living in Spain. This is important because we will send your health card, which you will use to visit the doctor, to that address. If you do not yet know where you will be living, you can enter your address in your home country and then provide us with an address in Spain later.

Appendix

**Countries that require
a visa and private
health insurance**

COUNTRIES REQUIRING A VISA AND PRIVATE INSURANCE

All countries outside the EU, EEA and Switzerland require a visa and private health insurance to study in Spain.

1. Europe (non-EU/EEA)

Albania, Andorra, Armenia, Azerbaijan, Belarus, Bosnia and Herzegovina, Georgia, Kosovo, North Macedonia, Moldova, Montenegro, United Kingdom, Russia, Serbia, Turkey, Ukraine, Vatican City*

2. North America

Canada, United States, Mexico

3. Central America and the Caribbean

Antigua and Barbuda, Bahamas, Barbados, Belize, Costa Rica, Cuba, El Salvador, Guatemala, Haiti, Honduras, Jamaica, Nicaragua, Panama, Dominican Republic, Saint Kitts and Nevis, Saint Vincent and the Grenadines, Saint Lucia, Trinidad and Tobago

4. South America

Argentina, Bolivia, Brazil, Chile, Colombia, Ecuador, Guyana, Paraguay, Peru, Suriname, Uruguay, Venezuela

5. Africa

Angola, Algeria, Benin, Botswana, Burkina Faso, Burundi, Cape Verde, Cameroon, Chad, Comoros, Congo, Côte d'Ivoire, Egypt, Eritrea, Eswatini, Ethiopia, Gabon, Gambia, Ghana, Guinea, Guinea-Bissau, Equatorial Guinea, Kenya, Lesotho, Liberia, Libya, Madagascar, Malawi, Mali, Morocco, Mauritius, Mauritania, Mozambique, Namibia, Niger, Nigeria, Central African Republic, Democratic Republic of the Congo, Rwanda, São Tomé and Príncipe, Senegal, Seychelles, Sierra Leone, Somalia, South Africa, Sudan, South Sudan, Tanzania, Togo, Tunisia, Uganda, Zambia and Zimbabwe

6. Asia

Middle East Saudi Arabia, Bahrain, Qatar, United Arab Emirates, Iraq, Iran, Israel, Jordan, Kuwait, Lebanon, Oman, Palestine, Syria and Yemen

COUNTRIES REQUIRING A VISA AND PRIVATE INSURANCE

7. Asia – Central Asia

Kazakhstan, Kyrgyzstan, Tajikistan, Turkmenistan and Uzbekistan

8. Asia – South Asia

Afghanistan, Bangladesh, Bhutan, India, Maldives, Nepal, Pakistan and Sri Lanka

9. Asia – Southeast Asia

Brunei, Cambodia, Indonesia, Laos, Malaysia, Myanmar, the Philippines, Singapore, Thailand, Timor-Leste and Vietnam

10. Asia – East Asia

China, North Korea, South Korea, Japan, Mongolia and Taiwan

11. Oceania

Australia, Fiji, the Marshall Islands, the Solomon Islands, Kiribati, Micronesia, Nauru, New Zealand, Palau, Papua New Guinea, Samoa, Tonga, Tuvalu and Vanuatu

—

NUEVAMUTUASANITARIA

—



FERCO
· Advanced Education ·

Nueva Mutua Sanitaria, *always close*